

St. Peter Skete
HARRISON, MONTANA

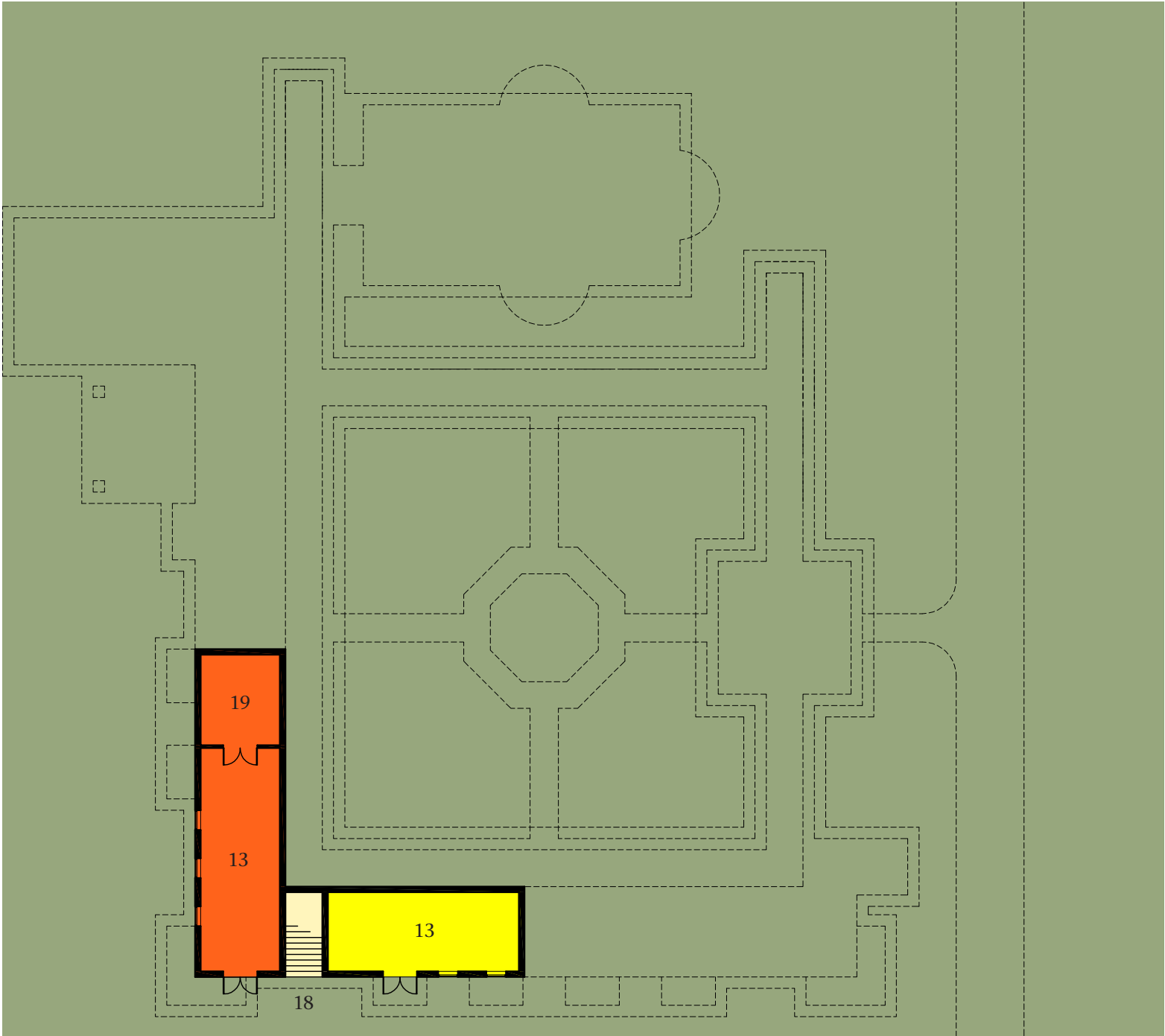
The Tobacco Root Mountains



O holy St. Peter, pray for us.

CONCEPT DIAGRAMS AND
CONCEPTUAL REFERENCES

St. Peter Skete
HARRISON, MONTANA



- 13 WORKSHOP
- 18 STAIR TO GROUND LEVEL
- 19 MECHANICAL ROOM

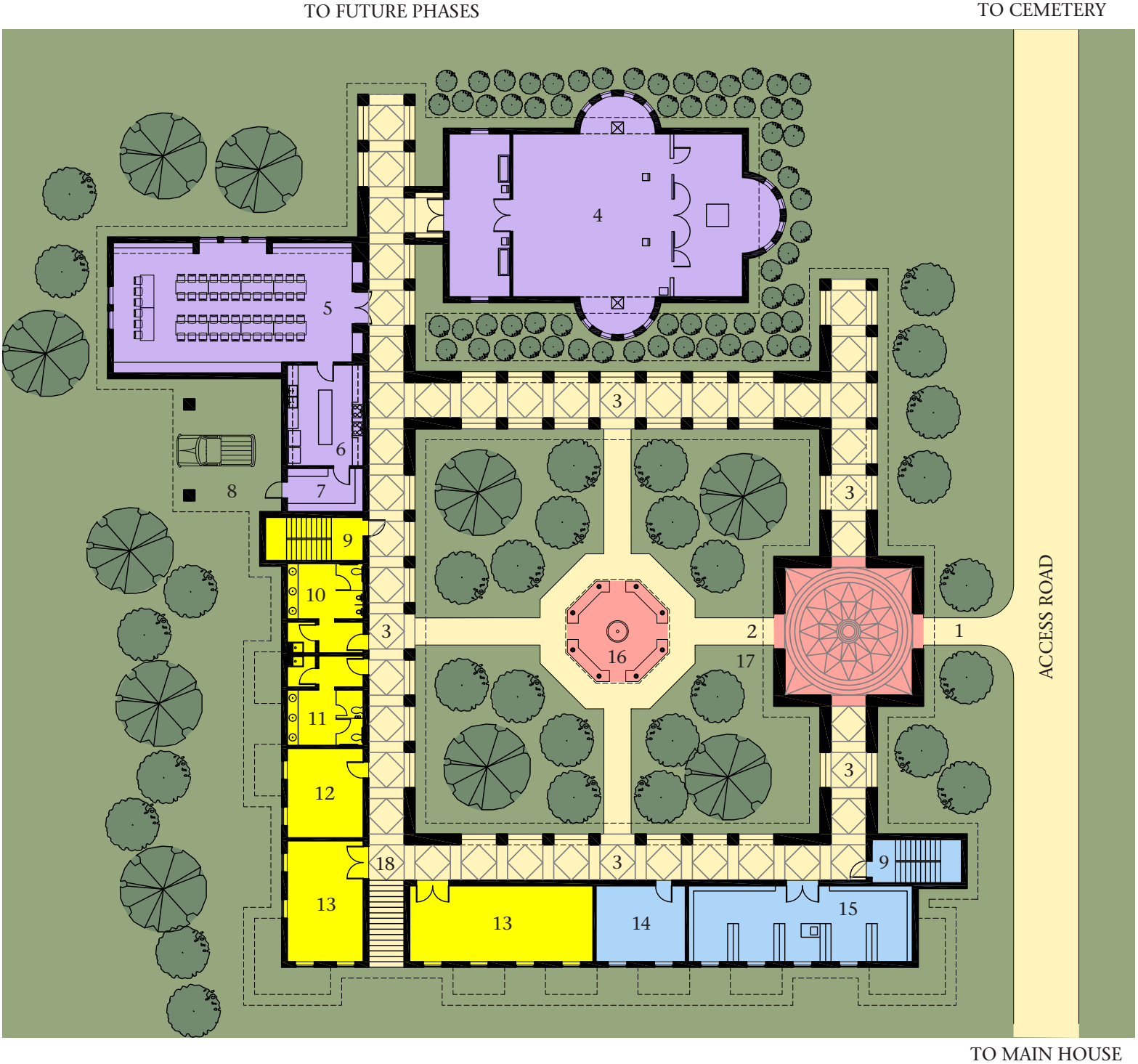
- PHASE 1
- PHASE 2
- PHASE 3
- PHASE 4
- PHASE 5



LOWER LEVEL FLOOR PLAN
RESTRICTED TO MONASTICS

St. Peter Skete

HARRISON, MONTANA



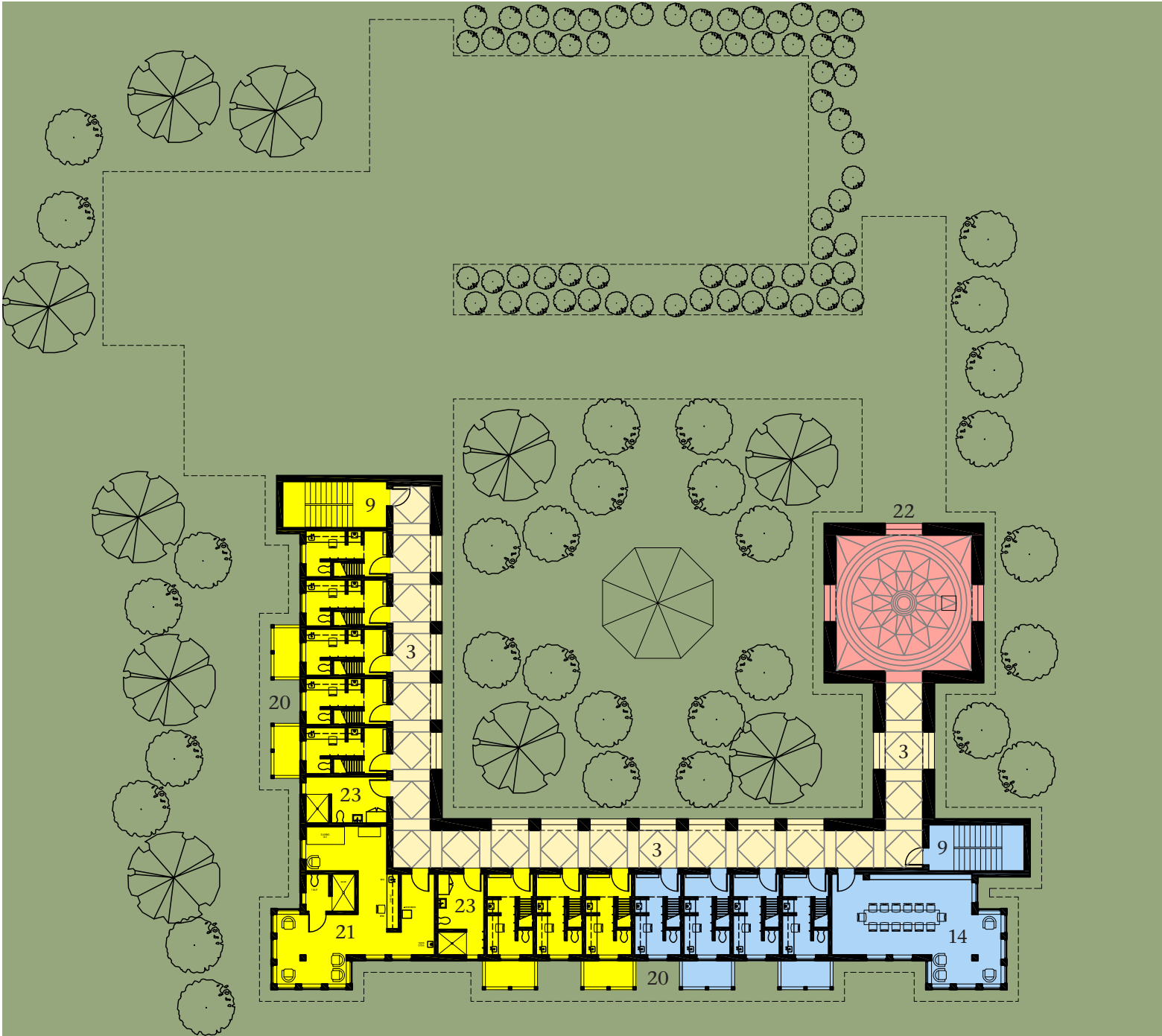
- 1 DROPOFF
- 2 ENTRY TOWER
- 3 OPEN ARCADE
- 4 KATHOLICON
- 5 REFECTORY
- 6 KITCHEN
- 7 PANTRY
- 8 RECEIVING
- 9 STAIR
- 10 MEN'S TOILET ROOM
- 11 KITCHEN AND REFECTORY (PH 2)
- 12 KITCHEN AND REFECTORY (PH 2)
- 11 WOMEN'S TOILET ROOM (PH 3)
- 12 LAUNDRY (PH 3)
- 13 CHAPEL (PH 2) WORKSHOP (PH 3)
- 14 COMMON ROOM
- 15 BOOKSTORE
- 16 PHIALE
- 17 LANDSCAPED COURTYARD
- 18 STAIR TO LOWER LEVEL

- PHASE 1
- PHASE 2
- PHASE 3
- PHASE 4
- PHASE 5

N

GROUND LEVEL FLOOR PLAN
 OPEN TO VISITORS

St. Peter Skete
HARRISON, MONTANA



- 3 CLOSED ARCADE
- 9 STAIR
- 14 COMMON ROOM
- 20 MONKS' CELLS
- 21 ABBOT'S CELL
- 22 PRAYER CHAPEL
- 23 MONKS' SHOWER

- PHASE 1
- PHASE 2
- PHASE 3
- PHASE 4
- PHASE 5



UPPER LEVEL FLOOR PLAN
RESTRICTED TO MONASTICS

St. Peter Skete
HARRISON, MONTANA



The architecture of St. Peter Skete will strive to emulate many of the enduring qualities of the monasteries at Mount Athos. The buildings will be constructed over time with the long-range goal of forming protected courtyards and passageways that capture winter sun, provide protection from winter winds as well as shaded respites from the summer sun. Main architectural components would include masonry walls of site-collected stone with brick accents, arches, arcades, a high position overlooking Willow Creek Reservoir, accents of various reds and oranges, domes, crosses and bracketed balconies.

CONTEXTUAL REFERENCES
FROM MOUNT ATHOS